



Brett T. Hosterman, District 8 President

June 18, 2013

Dear District 8 Colleague,

PMEA is a professional organization that is here to serve you and your professional needs. Over the past few weeks many of you engaged in a survey that I put together to gain a better understanding of what you are looking for from PMEA. The results of the survey exposed what PMEA does really well, and what we need to improve on. Your feedback was very important to myself and the executive board of District 8 as we brainstorm where we are headed. We all know that education is not the same as it was ten or even five years ago, and there are aspects of PMEA that are not changing with the times. It is our hope that District 8 will lead the way and be on the cutting edge of some new and exciting things within PMEA.

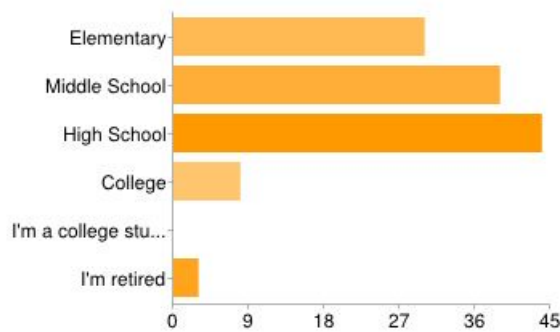
As promised, the results of the survey are attached. Many of you expressed wanting to be able to collaborate with your colleagues in other ways and times other than at festivals. This is the first step. All responses are important and will be considered in future discussions. I feel it is important that you take a look at what some of your other colleagues had to say and value their opinions as your own.

Finally, as a result of the survey, we are moving forward with the planning of our next professional development event which will occur on Monday, October 14, 2013 at Bucknell University. More information will be provided at a later date. Please be aware that all of the Superintendents of District 8 received a letter from me expressing the importance of your attendance at our District wide professional development day. I know for a fact that many of your building administrators and Curriculum Directors have already been made aware of it. It is going to be up to you to file the appropriate paper work and request approval to attend. You provided excellent suggestions for professional development ideas, and we will do our best to address your needs. In the future, know that your ideas are always welcome and can be directed to myself, our Professional Development Chair Russ Wynn, or our Vice-President Kim Council. Have a relaxing summer, and we look forward to seeing you on October 14th!

Sincerely,

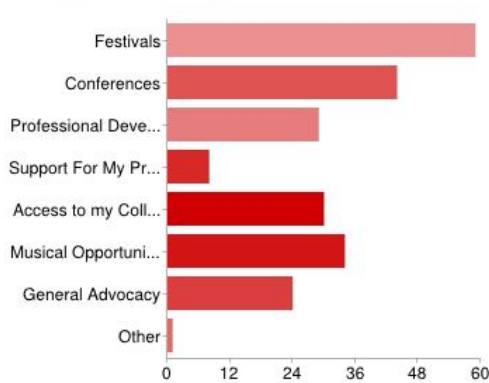
Brett T. Hosterman, President
pmea8president@gmail.com

I currently teach at what level?



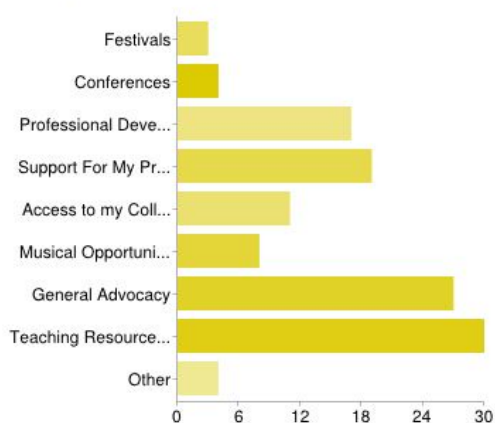
Elementary	30	24%
Middle School	39	31%
High School	44	35%
College	8	6%
I'm a college student	0	0%
I'm retired	3	2%

As a professional organization, PMEA does a great job providing me with:



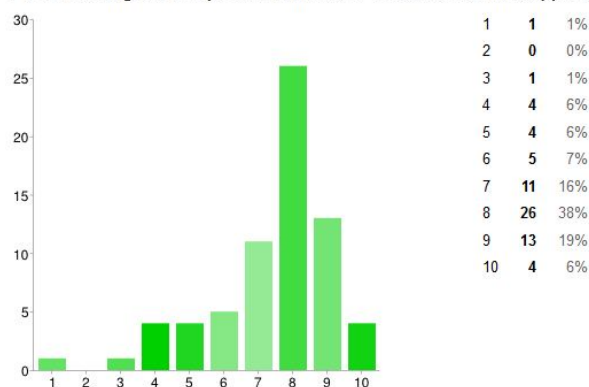
Festivals	59	26%
Conferences	44	19%
Professional Development	29	13%
Support For My Program	8	3%
Access to my Colleagues in the Music Profession	30	13%
Musical Opportunities For My Students	34	15%
General Advocacy	24	10%
Other	1	0%

As a professional organization, I wish PMEA would do a BETTER JOB with providing me with:

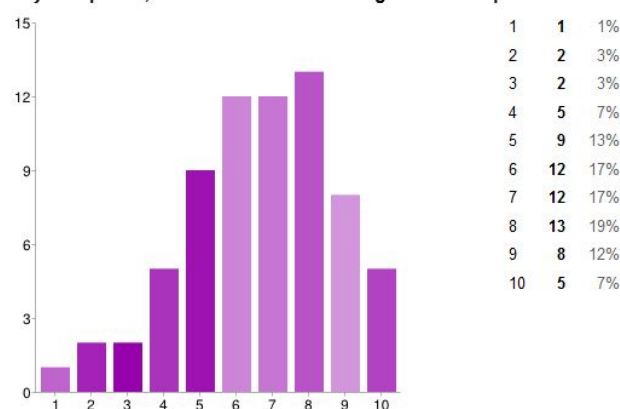


Festivals	3	2%
Conferences	4	3%
Professional Development	17	14%
Support For My Program	19	15%
Access to my Colleagues in the Music Profession	11	9%
Musical Opportunities For My Students	8	7%
General Advocacy	27	22%
Teaching Resources / Best Practices	30	24%
Other	4	3%

The Mission of PMEA is to advance music education by encouraging excellence in the study, teaching and making of music. In your opinion, how well is PMEA meeting the first part of its mission: 1. to Promote and support quality music education, learning and performance?



In your opinion, how well is PMEA meeting the second part of its mission: 2. to Promote and support music education in schools and communities?



What do you feel can be done at the District Level to help meet the goals of PMEA?

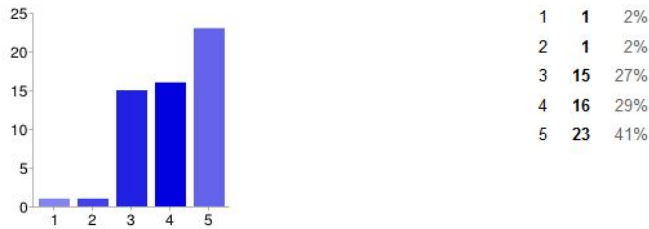
*** (results may be paraphrased and duplicate answers are not included)*

- Encourage the involvement of students at the younger levels below High School.
- Provide more opportunities for Elementary and Middle School teachers to feel included in PMEA.
- Current festival system seems antiquated, take a look at system to see if it meets the needs of our students.
- More professional development opportunities other than at festivals.
- More/Better Public Relations to educate about PMEA and Music Education.
- More/Better advocacy.
- Encourage more collaboration with our local universities, they have so much to offer our programs.
- New Teacher/College Student mentor program.
- Host a day specifically for Elementary teacher to get together to share ideas and learn from one another.
- Officers attend local school board meetings, more advocacy from the state level.
- Address financial issues associated with festivals. They are becoming too expensive for many schools.
- Providing/sponsoring master classes for students throughout our district (not one central location).
- Create a PR position on the District Exec board to pump PR into all of the local newspapers.
- Adjudication opportunities.
- Better communication among the members of our district.

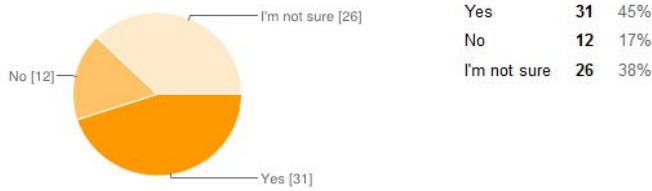
Develop ways to increase attendance at professional development opportunities.
 Better support and advocate in districts who may be losing a position. Where was PMEA when Shamokin lost positions or this year when Wyalusing lost theirs?
 In the past years the QUALITY of PMEA festivals have suffered. Work on keeping that high quality no matter what.

PROFESSIONAL DEVELOPMENT

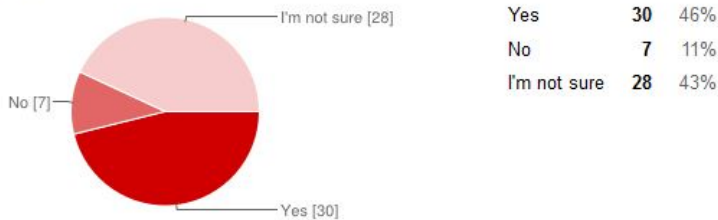
On a scale of 1 to 5, please rate how important it is to you that PMEA District 8 offers our members Professional Development Opportunities.



Does your school district have a Professional Development Day planned for this Columbus Day - October 14?



If yes, do you think that your school district would allow you to attend a District 8 Professional Development event if offered?



If given the choice, I would be more likely to attend a professional development event offered on:



List a few topics that you would like to see offered at a professional development event.

*** (results may be paraphrased and duplicate answers are not included)*

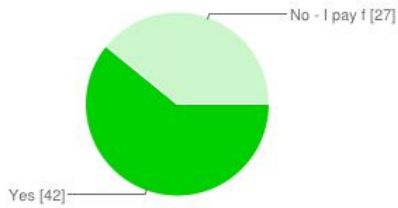
Learning Focused schools and Music Education
New Teacher Evaluation
Integration of the arts across multiple subject matters
Technology
Booster Organizations
Conducting Workshops
Recruitment and retention
Student Learning Objectives (SLOs)
General Music curriculums
Best practices
How to use Google Forms to make good recordings
Standards Aligned Systems - What is it? What do we do with it?
How to prepare jazz auditions
Advocacy we can do in our own schools
Grant writing and creative funding ideas
How to build community support
Overcoming scheduling hurdles
Curriculum writing and development
How to develop a k-12 comprehensive music program
Advocacy for string programs
General information – repertoire selection, developing programs, recruitment ideas, improving electives, choral warm ups and techniques, instrument repairs,

Are there any reasons why you or your colleagues may not choose to take advantage of professional development offered through District 8?

Time constraints with my current position
I've attend some and they haven't applied to me
Distance for some further school districts
Not sure my district would let me come
They are planned poorly and on dates that don't suit
I don't want to give up Saturdays with my kids
Location/cost
Many of our positions already require a ton of extra time outside of the school day. Its hard to justify more to my family and children.

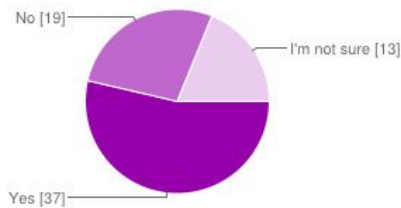
GENERAL MEMBERSHIP QUESTIONS

My School District pays for my PMEA membership.



Yes	42	61%
No - I pay for it out of my pocket	27	39%

Are all of your school district's music faculty members of PMEA?



Yes	37	54%
No	19	28%
I'm not sure	13	19%

If no, can you list any reasons why some of your faculty are not PMEA members?

No perceived benefits for those not taking students to festivals.

There are no advantages to them joining.

They do not have a performing ensemble.

Lack of benefit

Too expensive

I would not join PMEA except that my students may not participate in Chorus Fest if I am not a member.

It is expensive and I do not receive much benefit from PMEA. Receiving a magazine is really the only daily connection I have.

Do you have any suggestions for how PMEA District 8 can provide services and reach music teachers who are not currently PMEA members?

Provide more opportunities that are pertinent to elementary and middle school teachers. Love the newsletter idea! maybe a place on the website to share ideas?

I think that it really is a matter of one's sense of professionalism.

Some don't realize the value of belonging to a professional association. Sure it costs money. It's called investing in your profession / career. I believe there may be frustration with PMEA at the state level for not being more aggressive in advocacy with the Dept of Ed. Somewhere along the way,

PMEA dropped this from their mission and it is my opinion that it was a mistake. There is only so much that the local Dist 8 can do. MORE NEEDS TO BE DONE AT THE STATE LEVEL.

Invitation luncheon.

Maybe provide a reduced membership fee for District Level Only Professional Sessions. Some teachers at the Elementary level may not join since they do not attend festivals or the conference.

Providing a reduced District Only membership might get people to participate at the local level and attend workshops at festivals.

Be a vocal and strong advocate for the importance of the arts and the job of music educator in PA.

When the arts are drastically being cut, I do not think PMEA had been a strong support system.

What is happening in districts that have lost portions of their music staff? There should be enough of an outcry and advocacy going on, that communities rally behind music programs. I think it's sad that the status quo of cuts is the new norm without the promise and work of fighting to bring programs back. PMEA should be leading the fight!!!

Do a better job connecting with Elementary and Middle School teachers who feel that PMEA is not for them.

Are there any other issues you would like to address? Possible suggestions or solutions for the District 8 level?

No one wants to hear this question, but it is hurting many of us: How do we accommodate athletes that are excellent musicians but do not participate in PMEA events because of missing athletic competitions for overnight festivals?

District chorus should have a sight reading session.

It would be nice to have area get together outside of festivals. I believe this was done years ago at Country Cupboard. Maybe an elementary luncheon, secondary etc.. with specific topics to discuss, or just time to discuss program issues and discussion on ways to counter the growing cuts to fine arts all over PA. Lunch with round tables.

Work on establishing better communication.